

CAPITAL CITIES: EMBRACING THE CHANGE AND TAPPING INTO OPPORTUNITIES

13th December 2013
University of Latvia
Riga, Latvia



R&D performance of capital cities in Europe

Adam Płoszaj



Capital Cities: Embracing the Change and Tapping into Opportunities

RSA Research Network Seminar

Riga, Latvia, 13 December 2013

Introduction

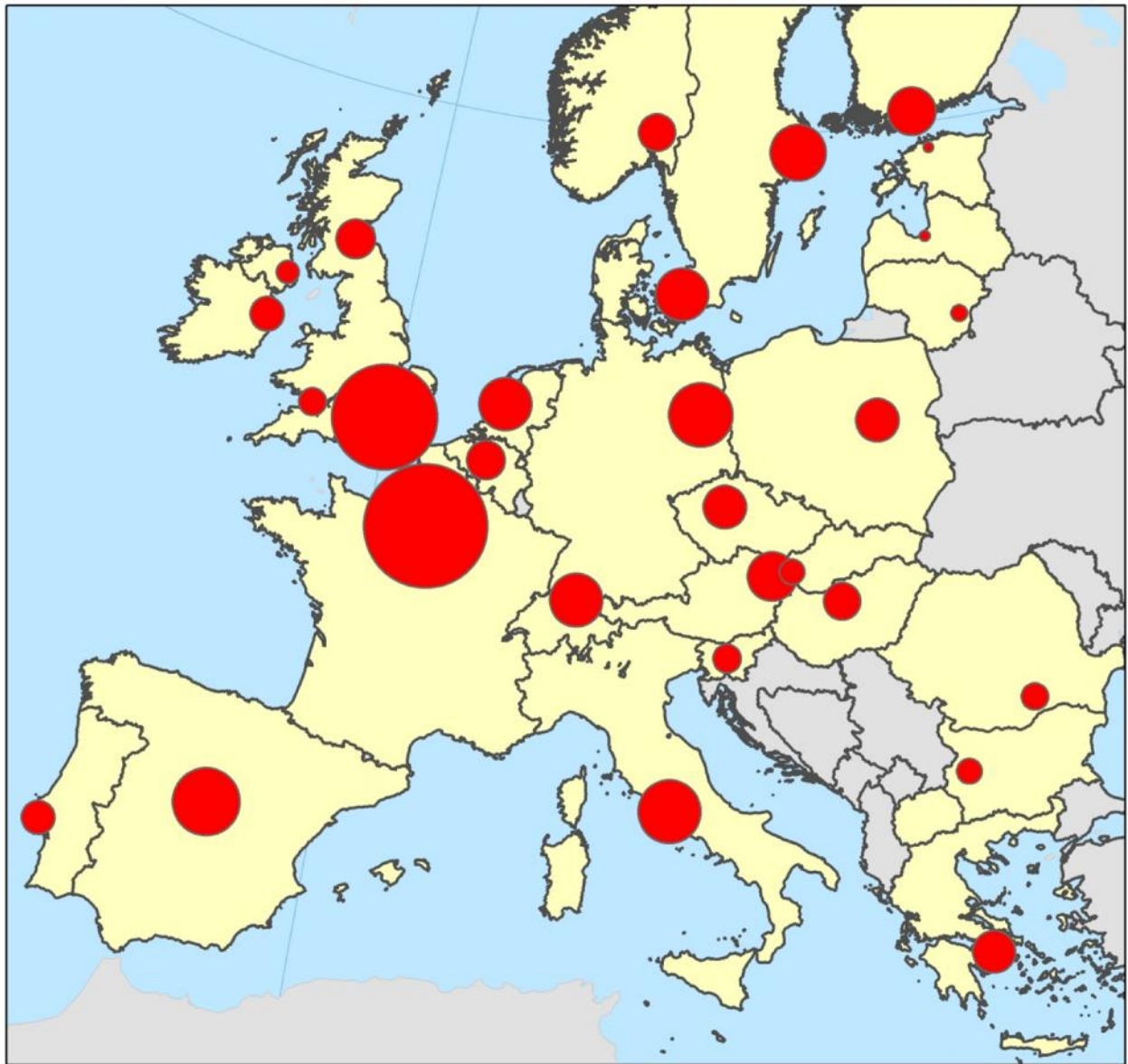


- Exploratory study
- Source of data: Web of Science, Thomson Reuters
- Time series: 2000-2010
- Spatial coverage: 39 European countries (EU28 + Albania, Bosnia and Herzegovina, Iceland, Macedonia, Montenegro, Norway, Serbia, Switzerland), 29 capital cities selected for current analysis
- Regional level: NUTS0-NUT3
- Main characteristics of the dataset: 4 mln articles

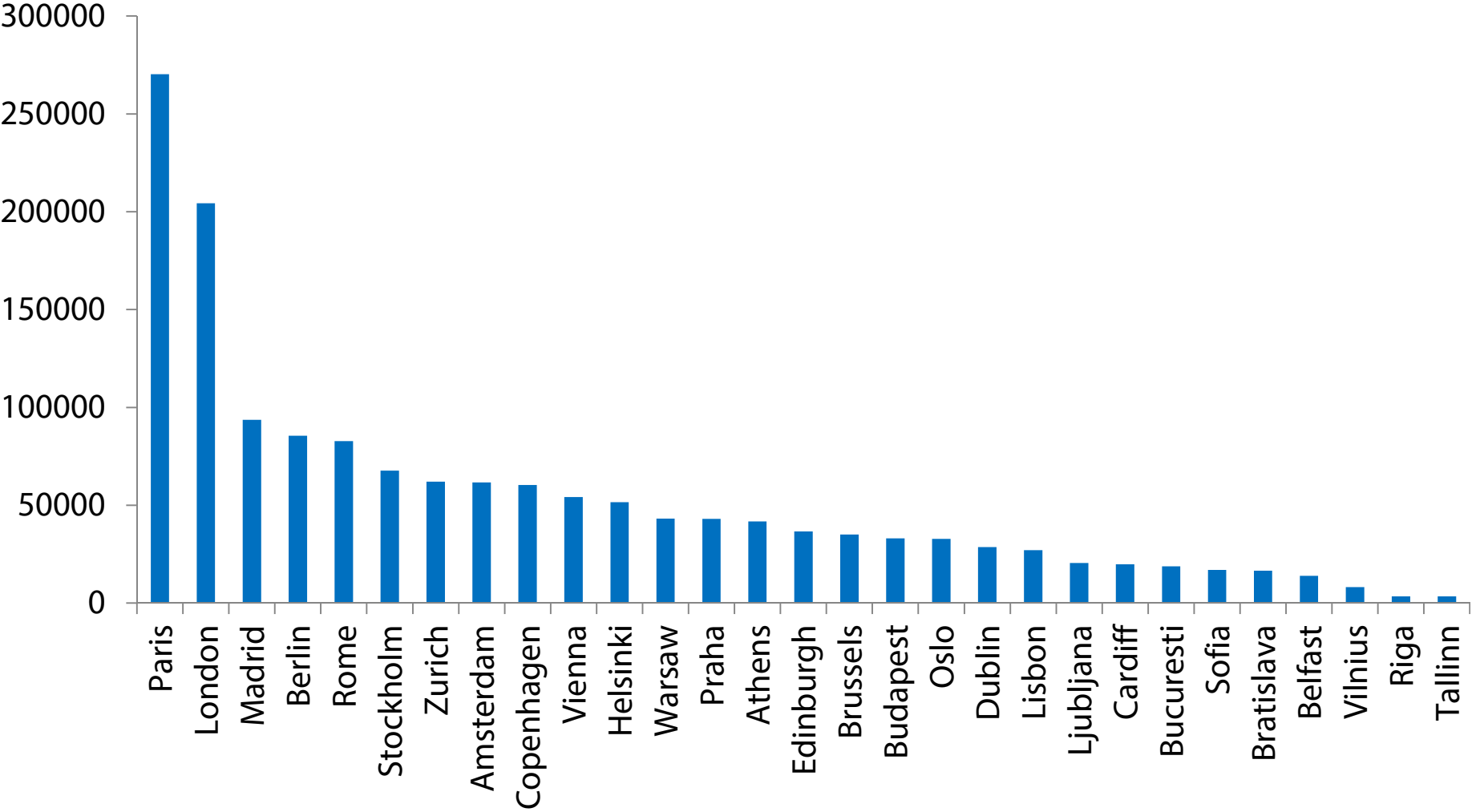
Number of articles published in period 2000-2010



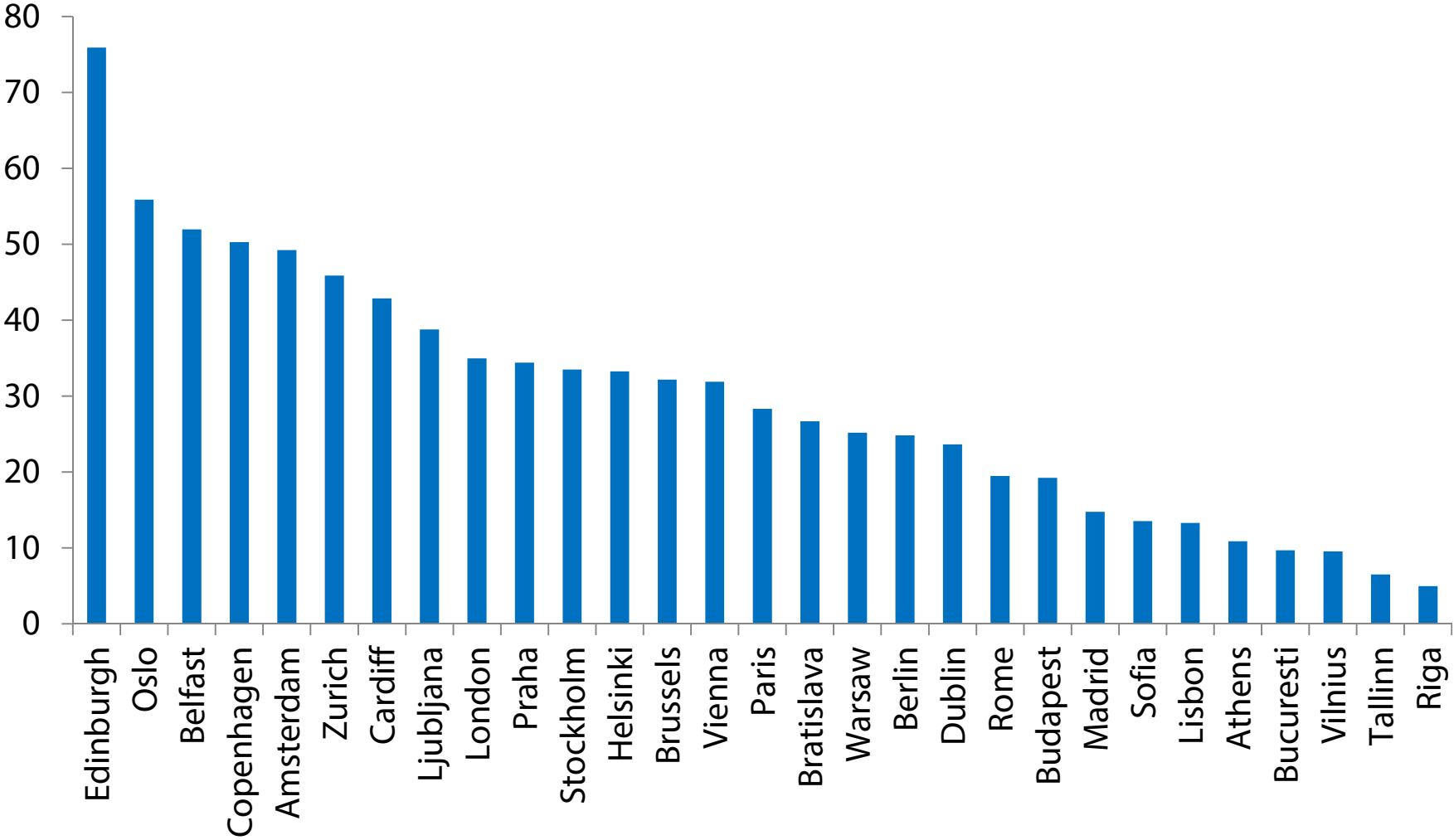
Legend
 140 000



Number of articles published in period 2000-2010



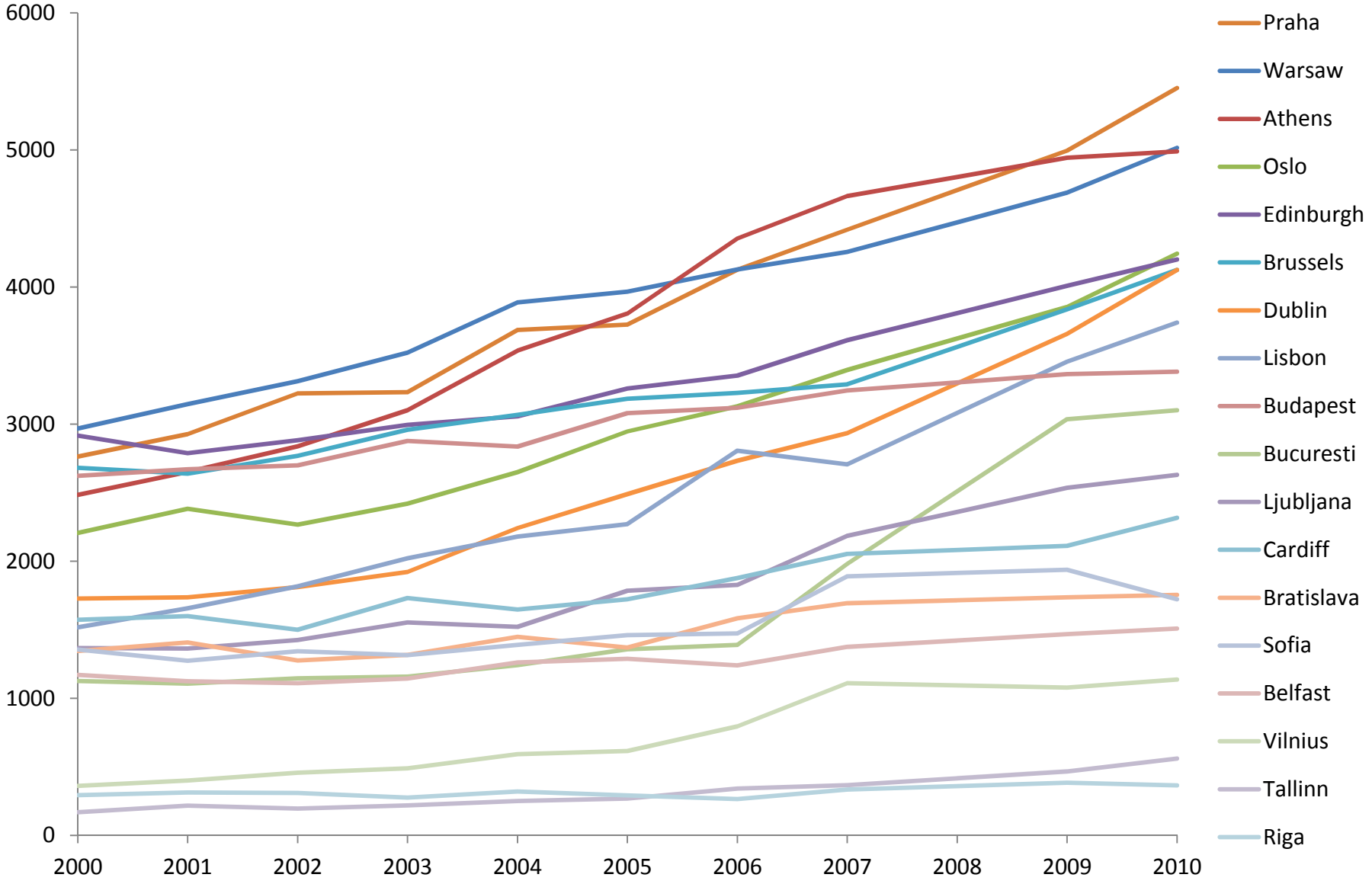
Number of articles per capita (2000-2010)



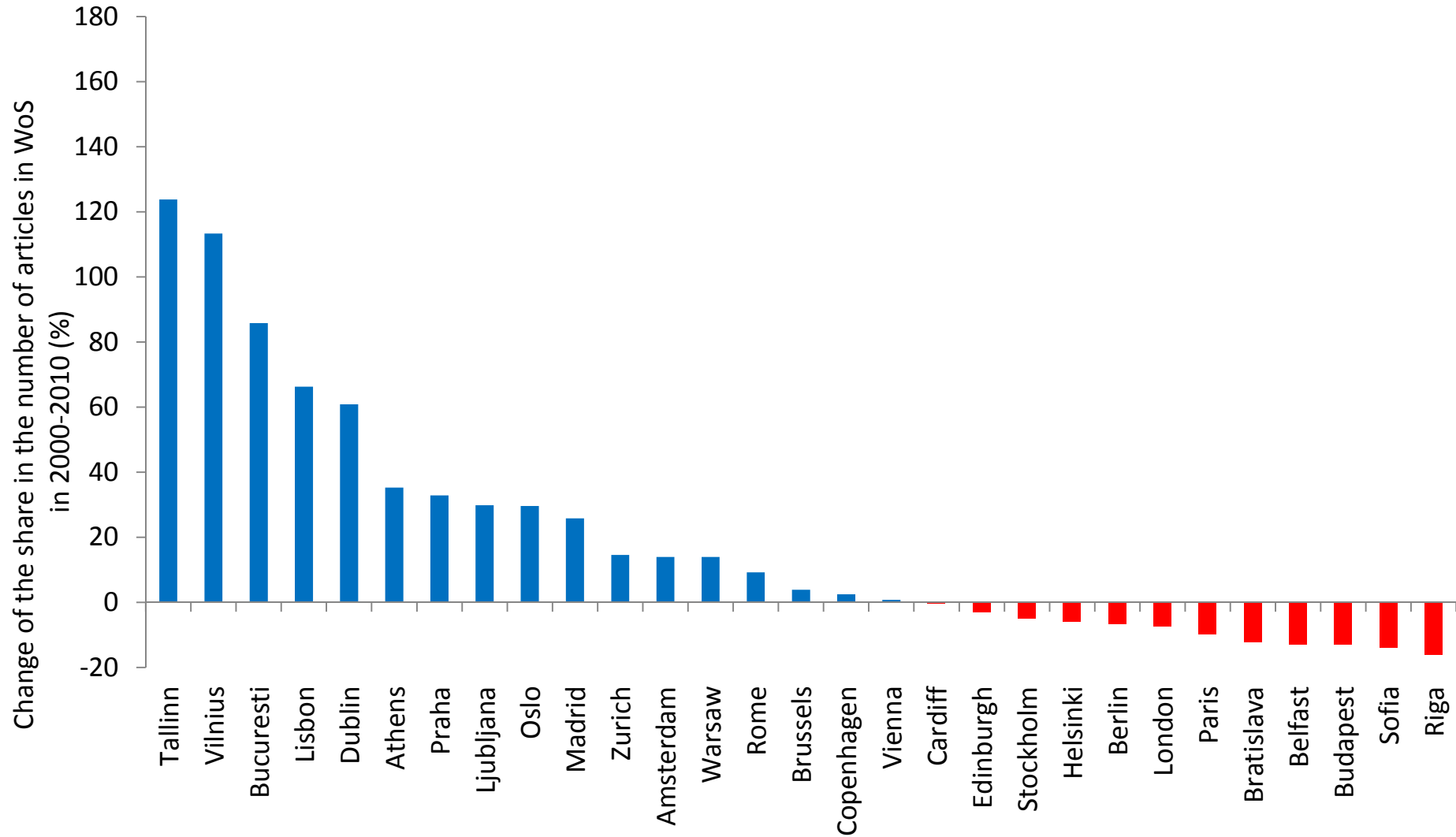
Change of the number of articles published in period 2000-2010 (%)



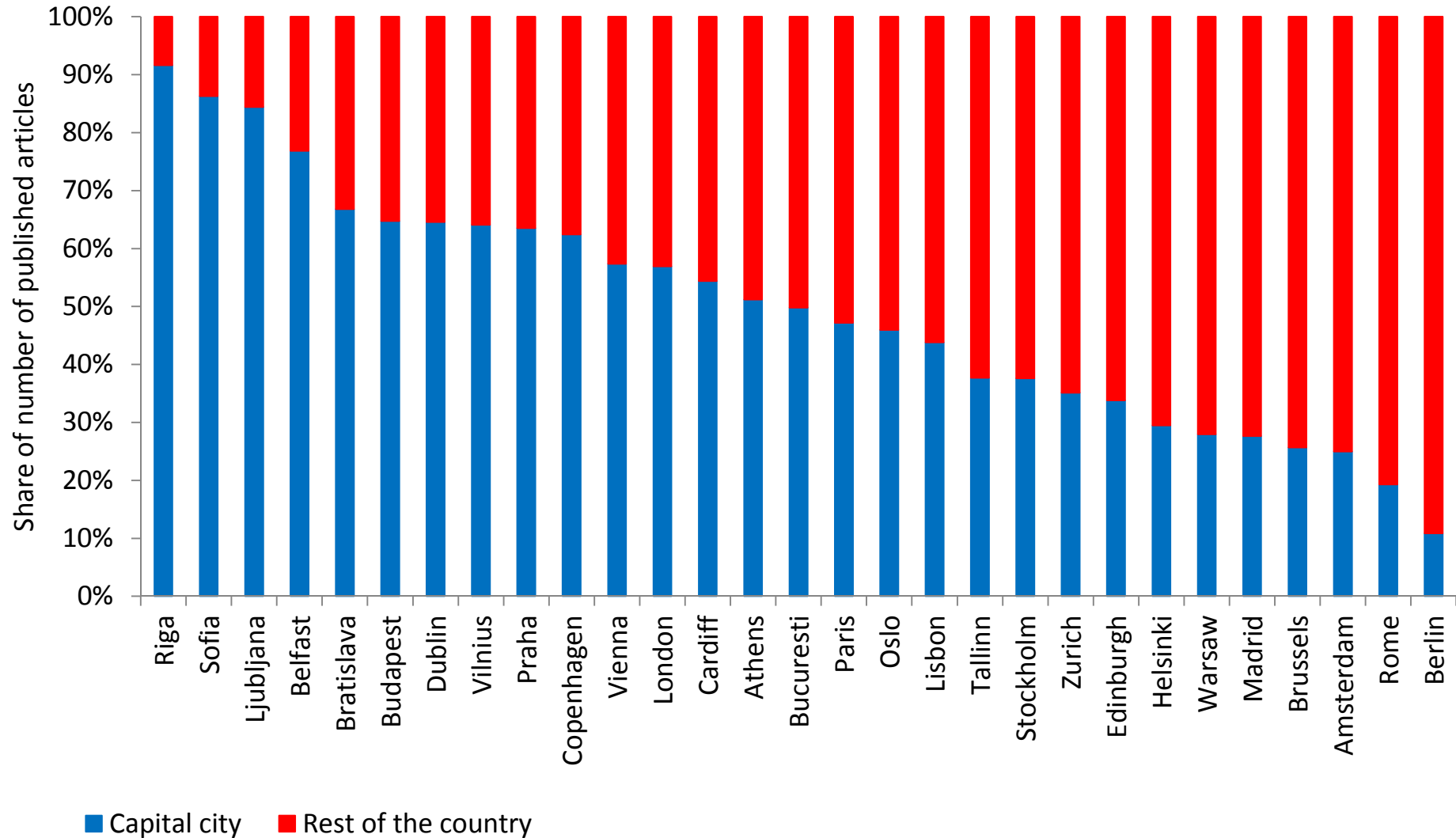
Number of articles published in period 2000-2010



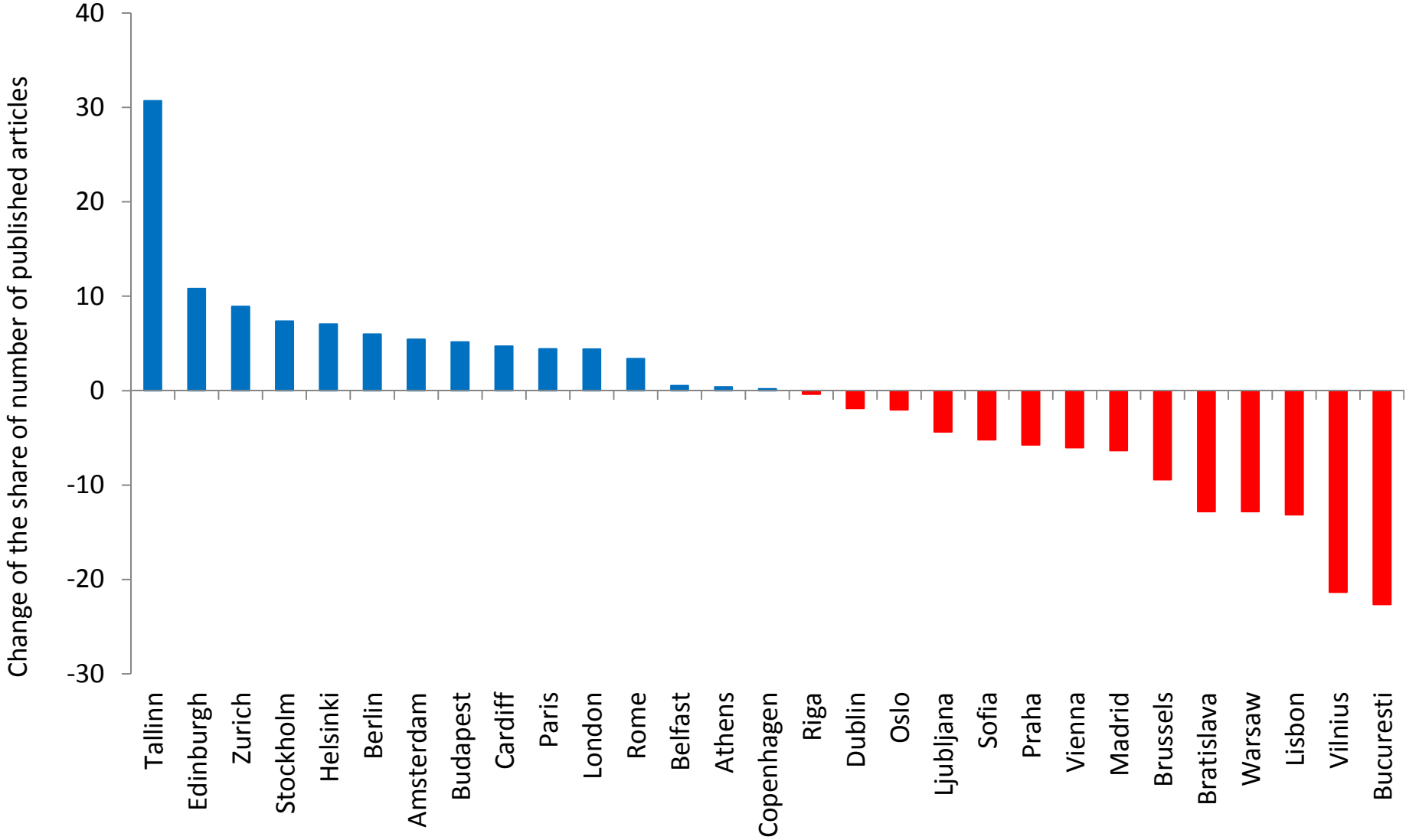
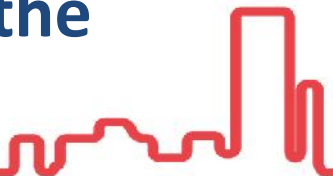
Change of share of world scientific production by selected European capital cities; from 2000 to 2010



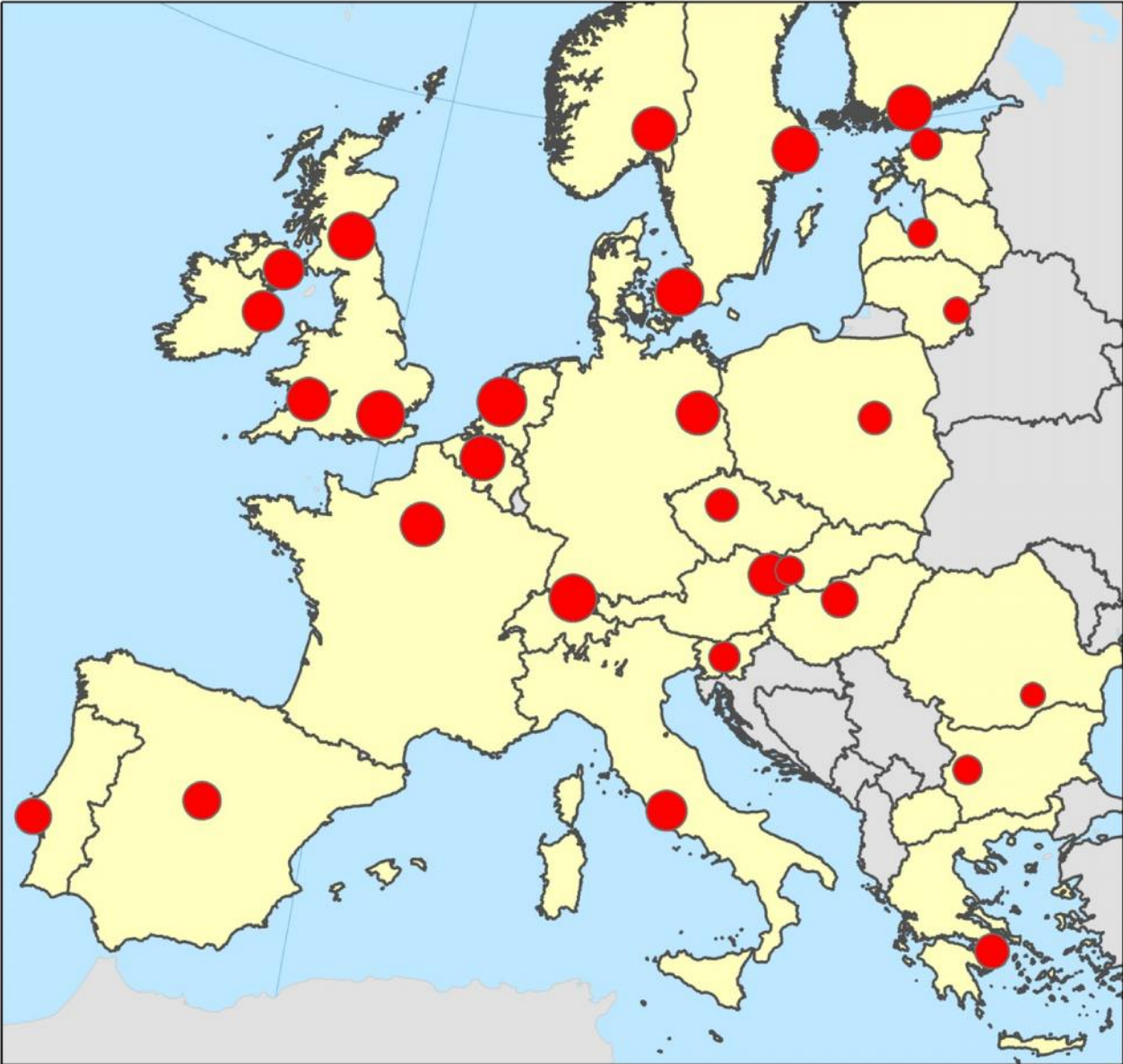
Significance of science performance of the capital city; 2000-2010



Change of significance of science performance of the capital city in the period 2000-2010

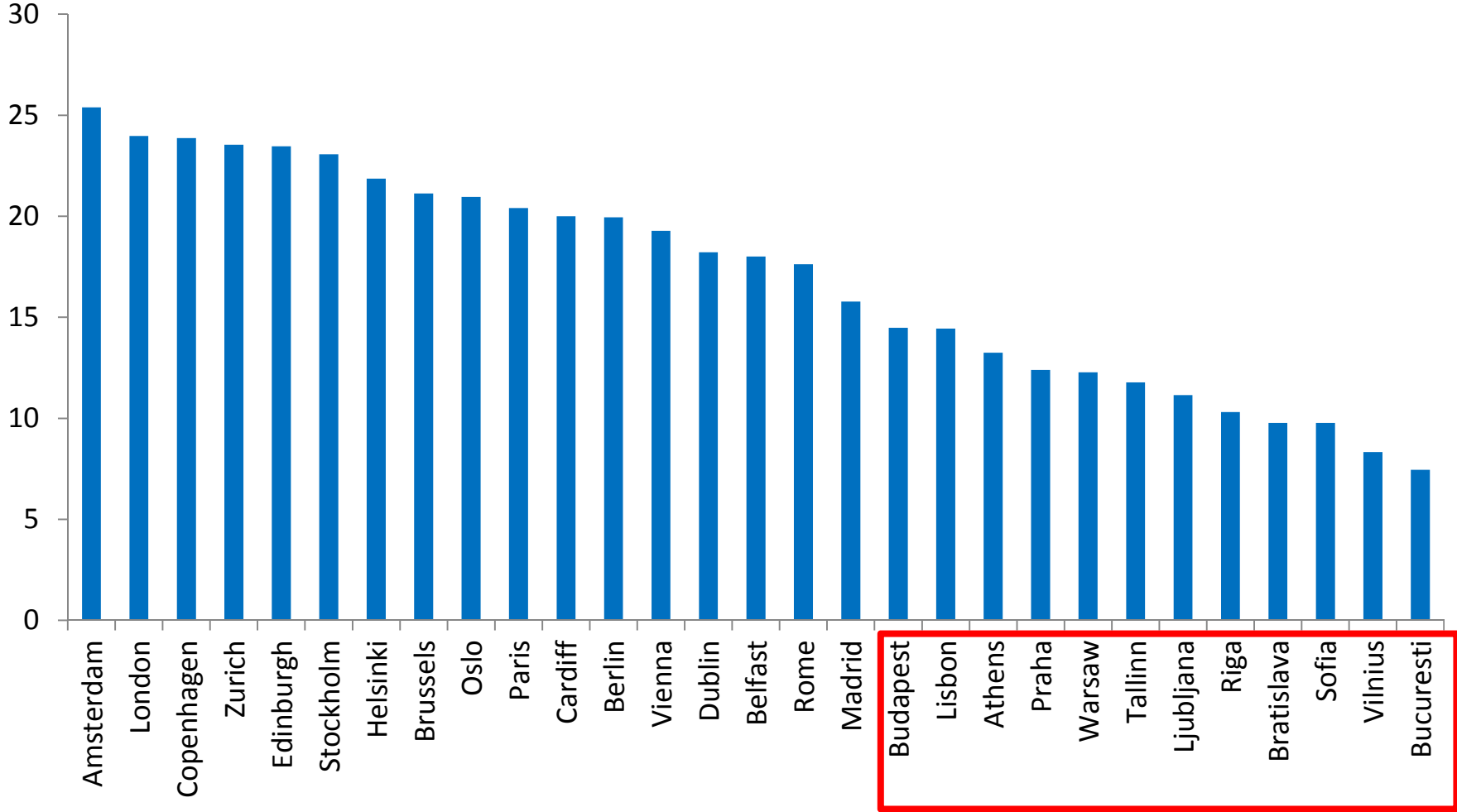


Number of citations per article (2000-2010)

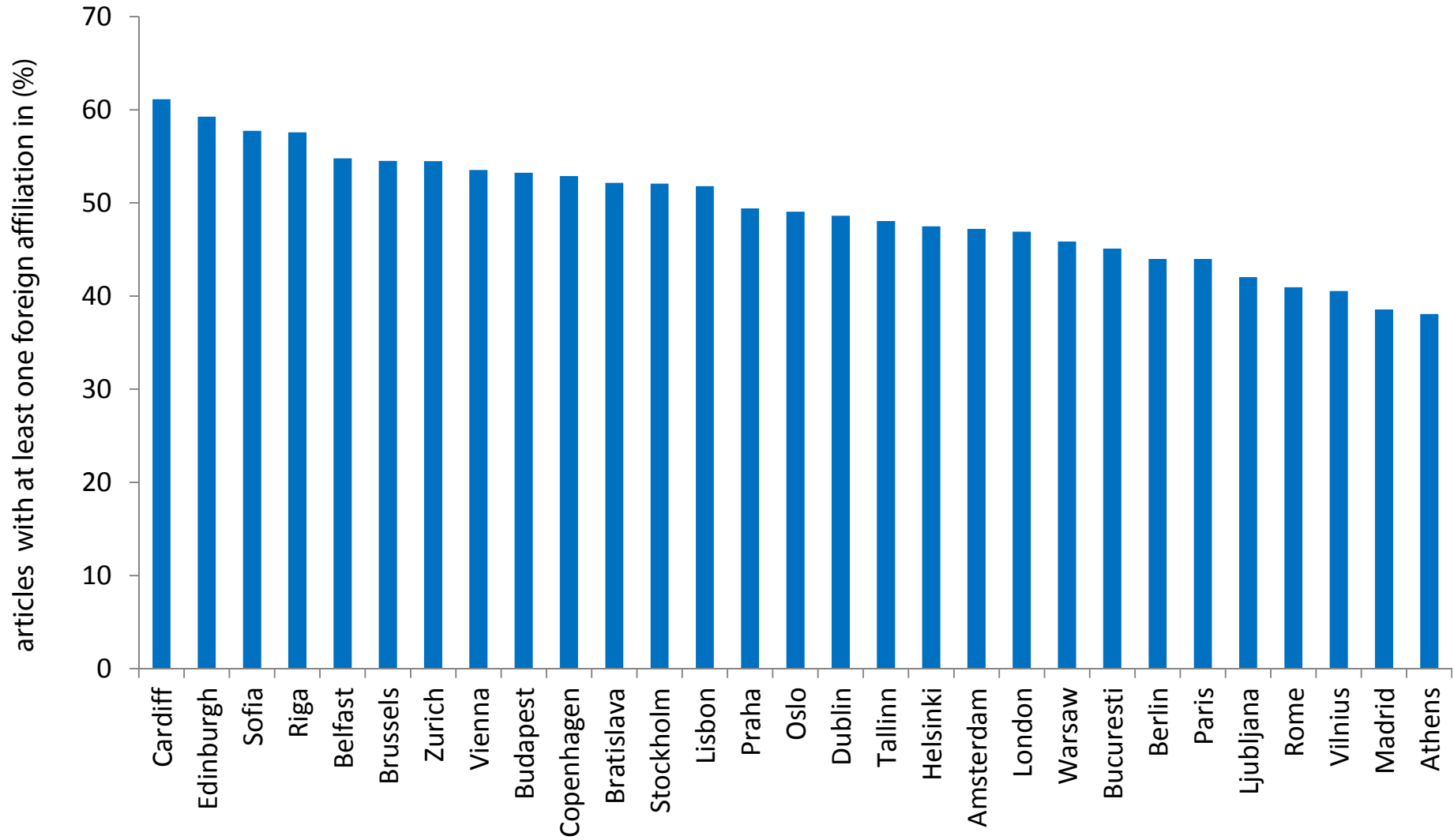


Legend
 53

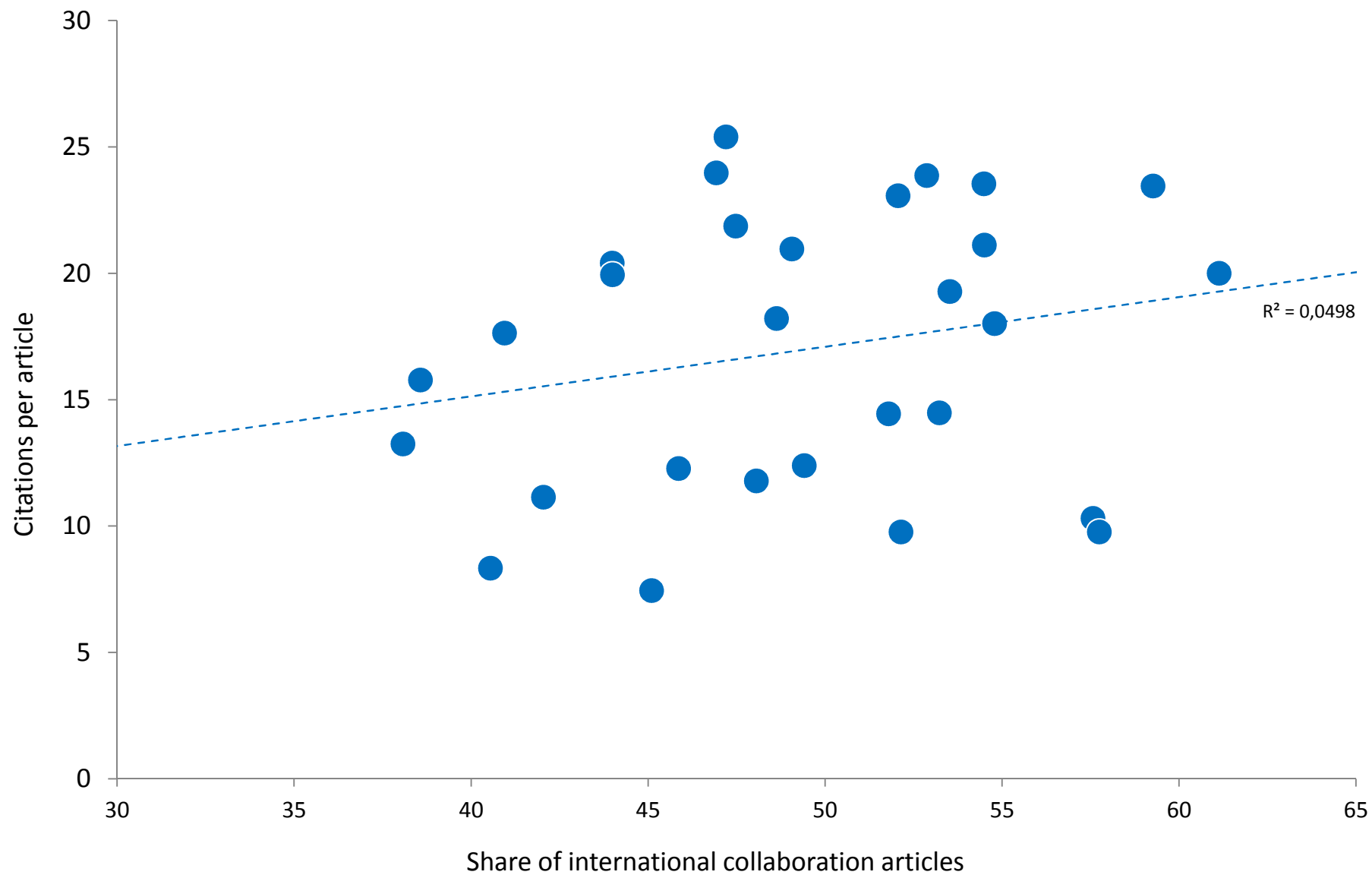
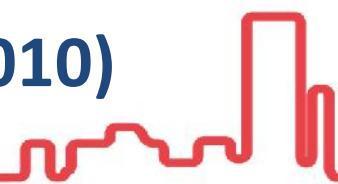
Number of citations per article (2000-2010)



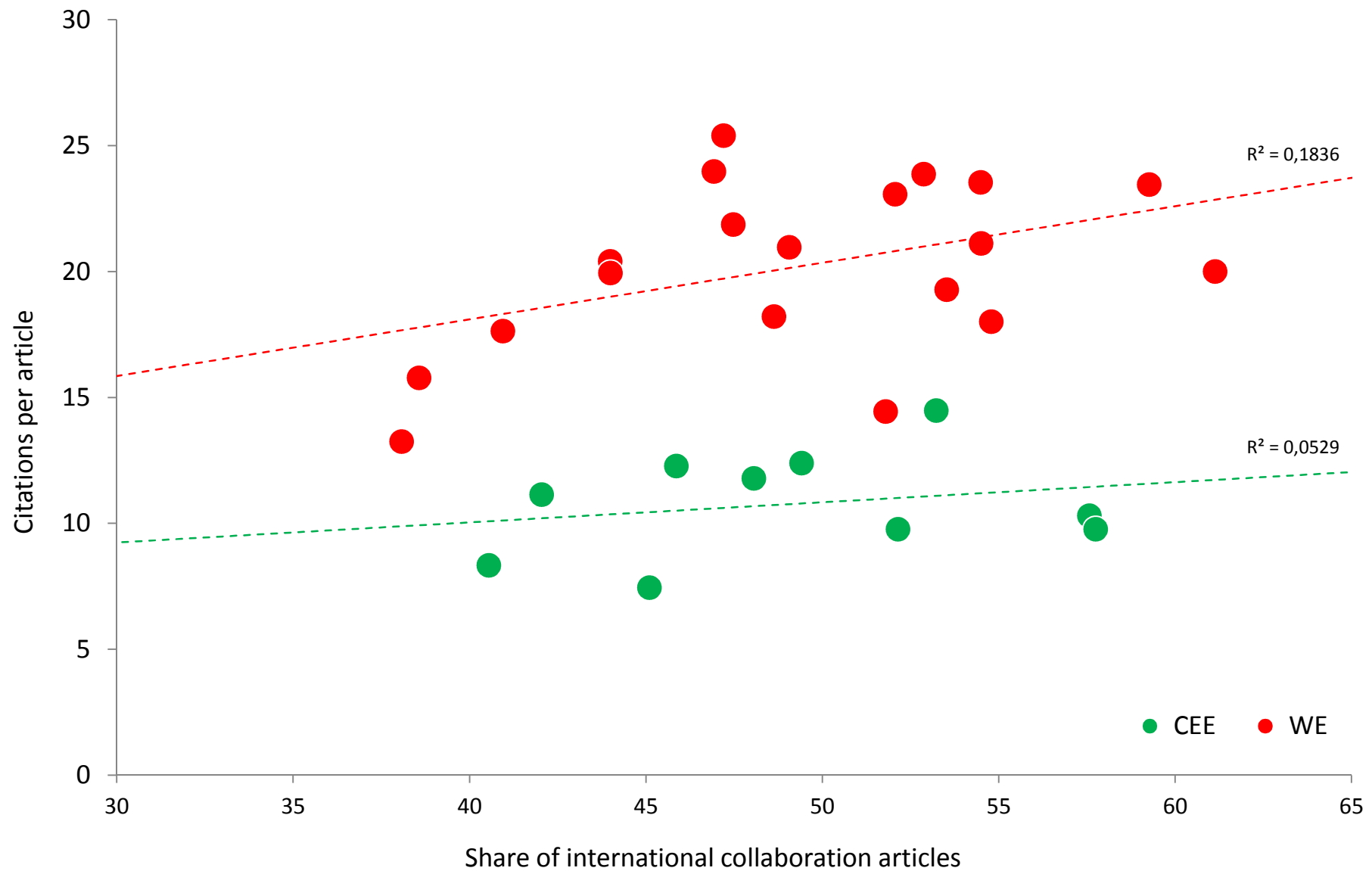
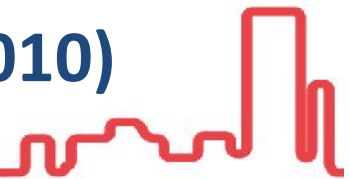
The scale of international collaboration in science (2000-2010)



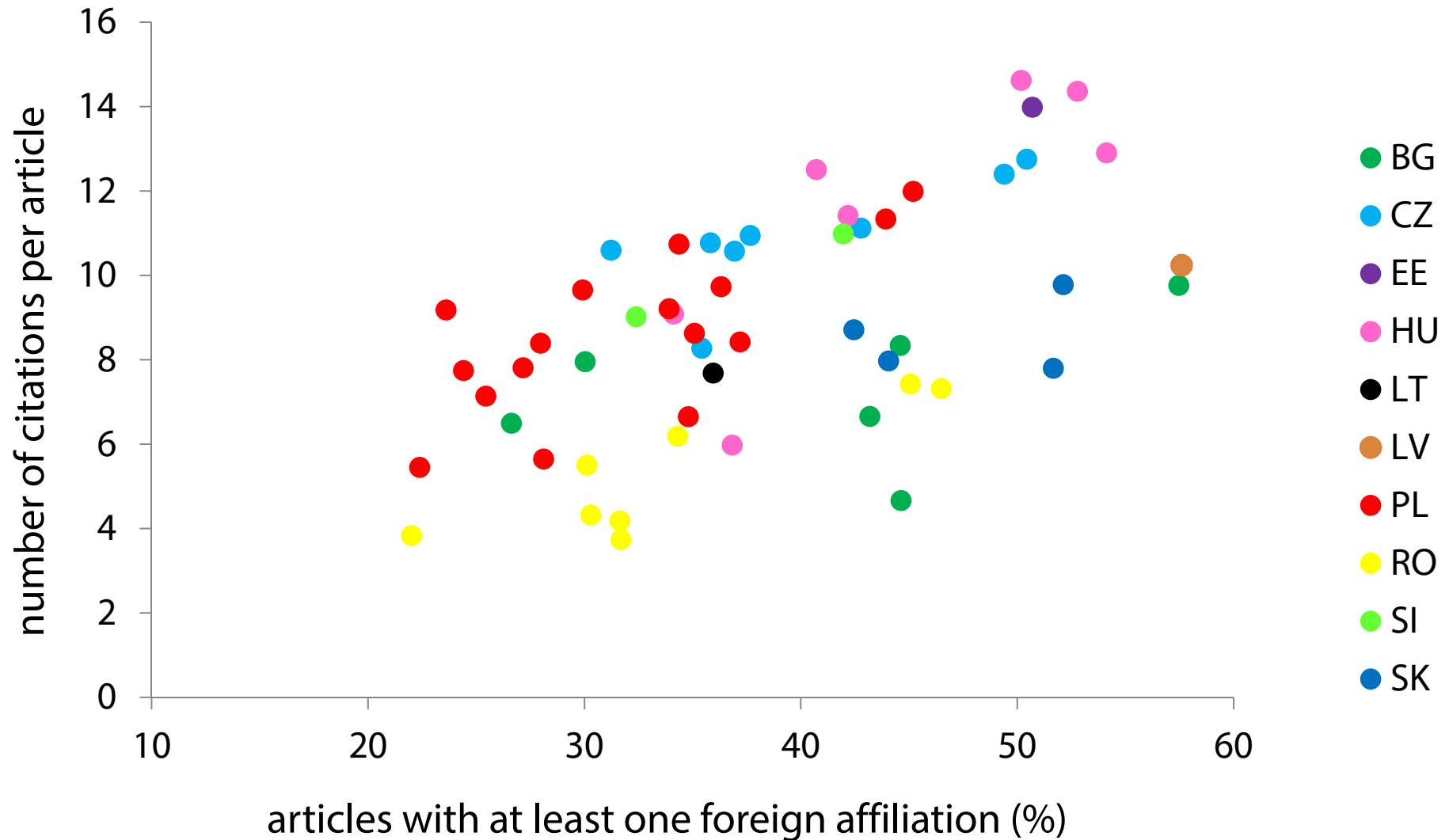
International collaboration and citations (2000-2010)



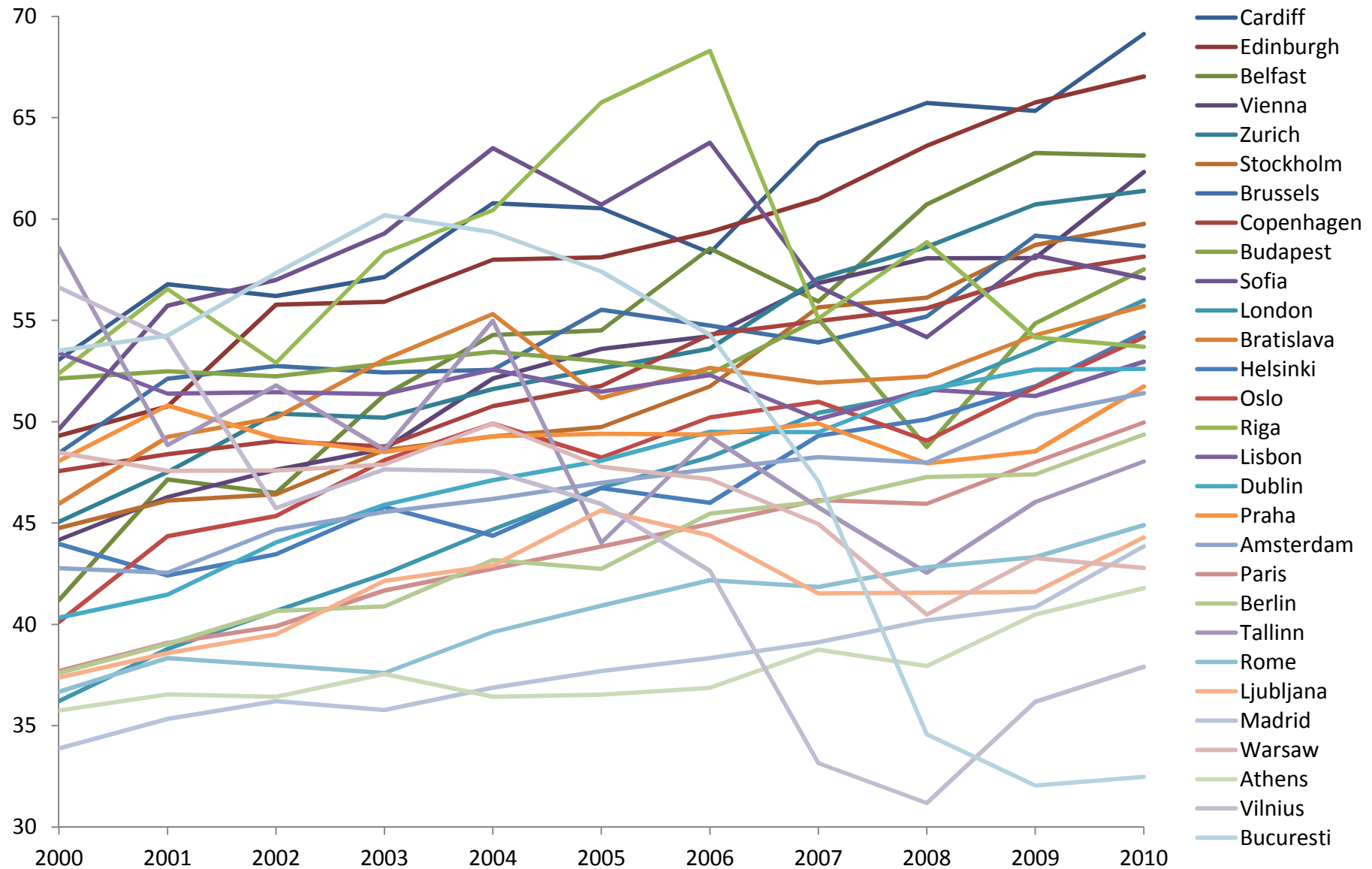
International collaboration and citations (2000-2010)



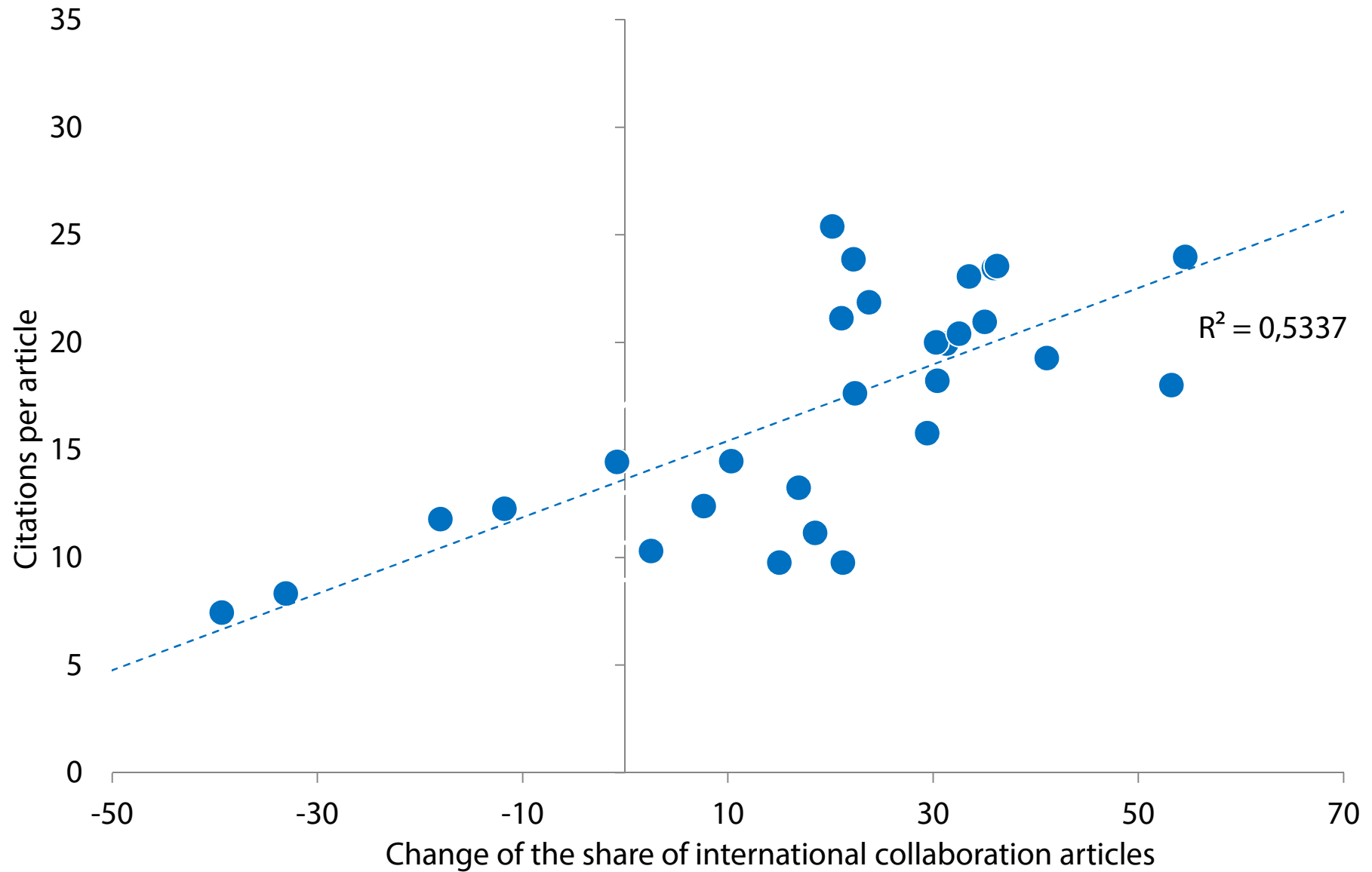
Significance of international collaboration in science in NUTS 2 regions of CEE countries; 2000-2010



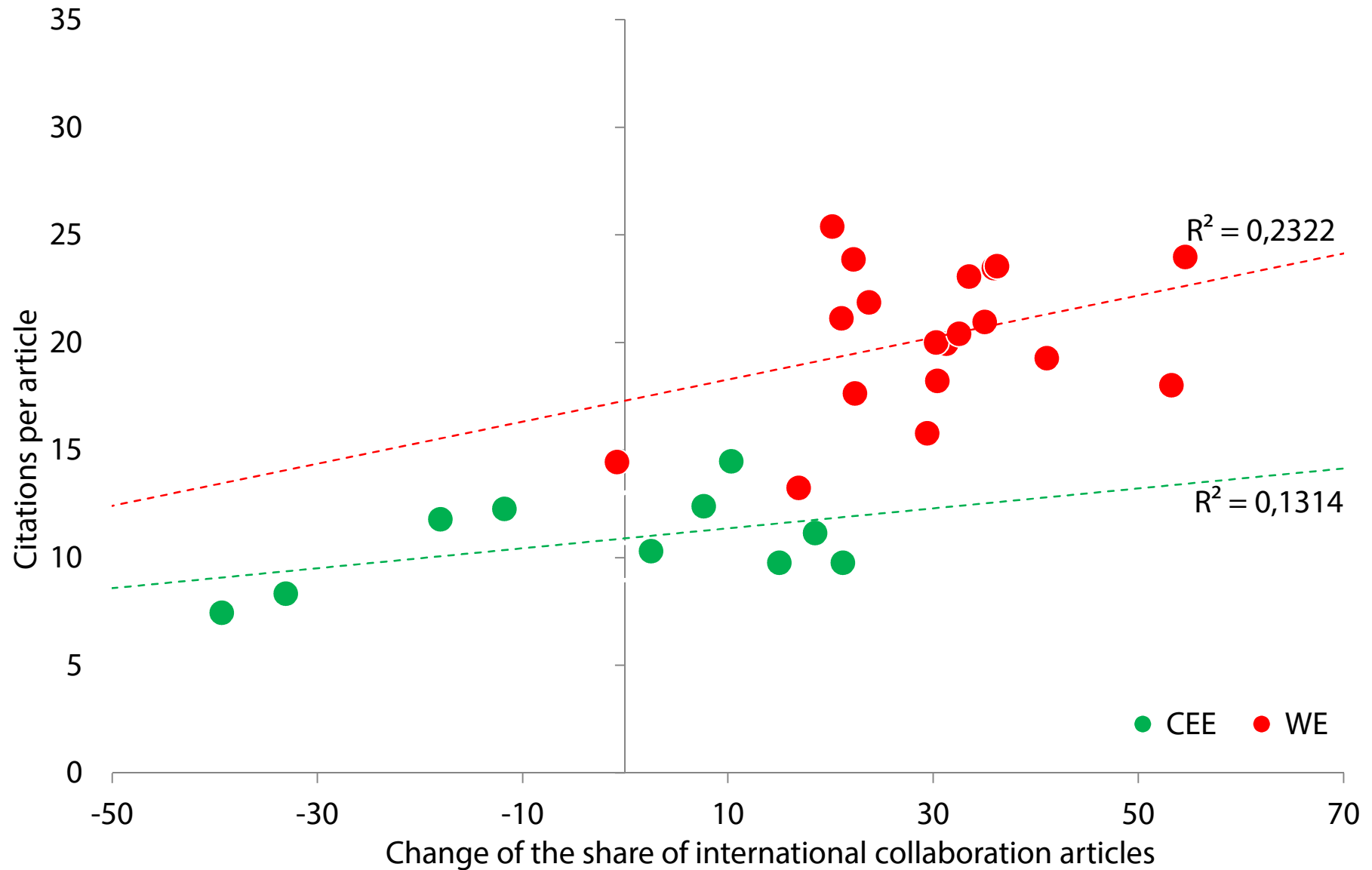
The scale of international collaboration in science (2000-2010)



Change of the intensity of international collaboration and citations (2000-2010)



Change of the intensity of international collaboration and citations (2000-2010)



Conclusions



- Growing number of scientific papers in European capital cities, however some of them are losing their relative position in the world (but crisis is not visible from the data)
- In most of the analysed countries the capital city is (the most) important scientific center
- International collaboration is important for science performance of capital cities
- Capital cities of Central and Eastern Europe perform worse than capital cities of Western Europe